



#16 Louisiana

LA Score: 47



Average score: 38.6



LA drew down 100% of federal child care funds

DC	1
MN	2
MD	3
AR	3
MI	5
NM	5
OR	5
GA	8
MA	8
ME	10
WA	10
CT	12
CO	13
NC	13
PA	15
LA	16
VT	17
WI	17
AK	19
DE	19
IN	19
OK	22
UT	23
FL	23
VA	23
NE	23
MT	27
ND	27
KY	29
CA	29
RI	29
SC	29
IL	33
OH	33
IA	35
WV	35
AL	37
NH	37
NY	39
NV	40
MO	41
HI	41
TN	43
TX	44
AZ	45
ID	45
NJ	45
MS	48
KS	49
SD	50
WY	50

Creating a Coordinated, Integrated Early Care and Education System: State Early Childhood Administration

In 2018, the Bipartisan Policy Center examined how states oversee federal and state funding dedicated to early childhood education, or ECE, programs. Now in 2021, we revisit each state system to understand enacted improvements and emerging challenges in state governance.

As the country adjusts to a new reality of work and home life amid the pandemic, American families are faced with the challenge of finding and affording quality child care, now more than ever. Early learning operates within a fragile business model, in which services cost more than most families can afford to pay. For this reason, states must administer funding with efficiency and effectiveness to ensure families are able to access programs and to maximize the reach of federal and state investments.

States are now responsible to distributing recent COVID-19 relief funding for child care—allocated through three successive relief packages by Congress in 2020—in addition to established funding streams that support multiple early childhood programs. The relief packages are intended to stabilize the fragile system that challenged access to affordable, reliable care. State governments are tasked with coordinating and combining the many different ECE funding streams allocated to them.

For all but one federal program, governors have wide discretion with regard to the administration and coordination of early childhood funding. The Bipartisan Policy Center set out to re-examine the issues of state governance, coordination, and integration by reviewing how states are meeting requirements set by federal statutes and agencies, as well as how states are capitalizing on the opportunity to create efficiency through their governance structures.

With this in mind, BPC is making recommendations at the federal and state level with an eye towards further reducing duplication and improving results for families. These recommendations are summarized in the full report. The following summarizes the findings for Louisiana.

More state data, including funding levels and demographic information, can be found at <https://bipartisanpolicy.org/report/national-child-care/>.

STRENGTHS OF LOUISIANA'S EARLY CARE AND EDUCATION SYSTEM

- Louisiana manages five programs serving children—Child Care and Development Fund (CCDF); Head Start Collaboration Office; state Pre-K; Child and Adult Care Food Program (CACFP); IDEA Part B, Section 619—under one agency, which improves efficiency and allows for better alignment of eligibility and monitoring requirements and quality improvement activities.
- CCDF, state Pre-K and the Head Start Collaboration Office are colocated improving program alignment and efficiency.

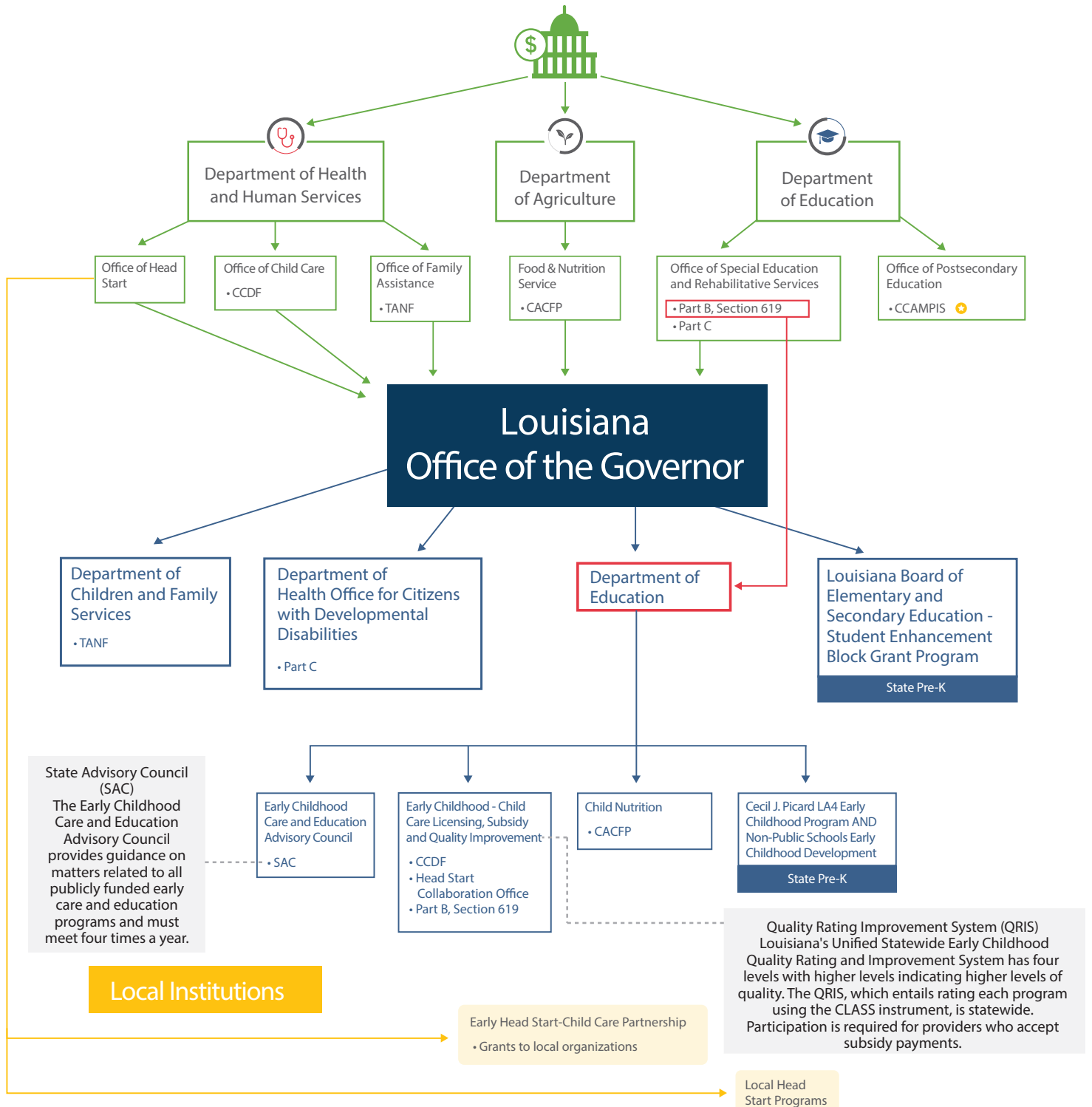
RECOMMENDATIONS FOR LOUISIANA'S EARLY CARE AND EDUCATION SYSTEM

- Facilitate cross-agency communication to ensure seamless coordination and transition for IDEA Part C (infants/toddlers) and Part B, Section 619 (3-5 year olds).
- Ensure the State Advisory Council for Early Education and Care, mandated by the Improving Head Start for School Readiness Act of 2007, is fulfilling its required activities, including conducting a statewide needs assessment on the quality and availability of early care and learning programs.



Flow of Federal Early Childhood Funds: Louisiana

KEY: → Funding mandated for State Departments of Education → Funding provided directly to local organizations



ECE Funding in Louisiana

Funding from Nine GAO-Identified Programs	FY 2019 Funding	FY 2020 Funding	FY 2021 Funding
CCDF Expenditure	\$96,658,239	\$216,527,537.17	\$1,129,491,126
Transfer from TANF	\$0	\$0	-
Head Start Allocation	\$194,760,231	-	-
Head Start			
Early Head Start			
IDEA Part C, Allocation (infant/toddler)	\$7,015,177	\$7,021,584	\$10,053,484
IDEA Part B, Section 619 Allocation (3–5 years)	\$6,710,795	\$6,757,121	\$9,760,273
CCAMPIS Grants	\$271,570	\$383,143	\$383,143
Additional ECE Funding Streams	FY 2019 Funding	FY 2020 Funding	FY 2021 Funding
TANF Child Care Expenditure (Direct)	\$10,741,970	\$12,652,756	-
TANF Pre-K / Head Start Expenditure	\$40,644,145	\$51,151,399	-
CACFP Allocation	\$89,794,549	\$85,164,483	\$91,785,000

BPC Reviewed

BPC reviewed the following federally-funded programs to assess the efficiency and integration of Louisiana’s early care and education system.

- Child Care and Development Fund (CCDF)
- Head Start
- Child Care Access Means Parents in School (CCAMPIS)
- Early Intervention Program for Infants and Toddlers with Disabilities (IDEA Part C)
- Preschool Development Grant Birth through Five (PDG B-5)
- Preschool Grants for Children with Disabilities (IDEA Part B, Section 619)
- Promise Neighborhoods
- Striving Readers Comprehensive Literacy
- Child and Adult Care Food Program (CACFP)
- Temporary Assistance for Needy Families (TANF)
- Early Head Start - Child Care Partnership (EHS-CCP)
- Race to the Top, Early Learning Challenge

Number of Children Under Age 6



UNDER 3
163,074



3-4 YEARS OLD
118,884



5 YEARS OLD
59,466



Percentage of Children in Poverty
26.9%