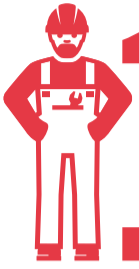
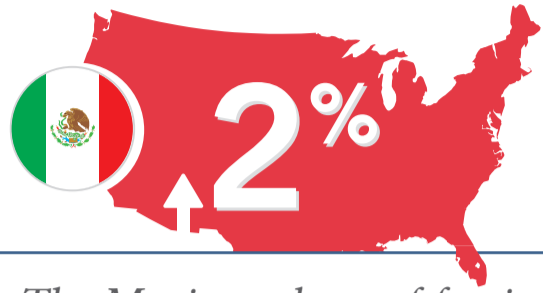


TOP 10 FACTS ABOUT IMMIGRATION TRENDS



17.3%

OF THE U.S. LABOR FORCE IS MADE UP OF FOREIGN-BORN WORKERS WHO HELP OFFSET AN AGING AND SHRINKING NATIVE-BORN WORK FORCE



The Mexican share of foreign-born in the United States has increased
ONLY 2% IN THE LAST 20 YEARS

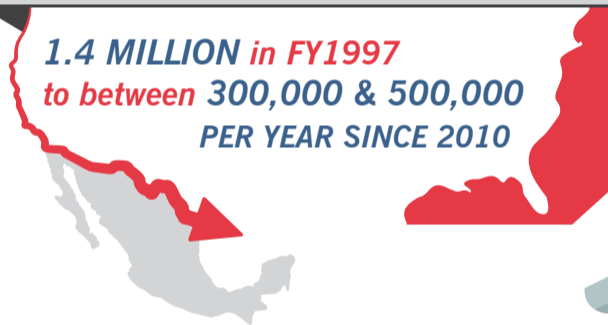
Because of declining rates of new immigration from Mexico and increases in Asian migration,
TODAY THERE ARE MORE ASIAN IMMIGRANTS THAN MEXICANS IMMIGRANTS LIVING IN THE U.S.

The share of the foreign-born population holding a
POSTGRADUATE DEGREE HAS RISEN BY NEARLY



Apprehensions at **U.S. BORDERS**
HAVE PRECIPITOUSLY DECLINED FROM

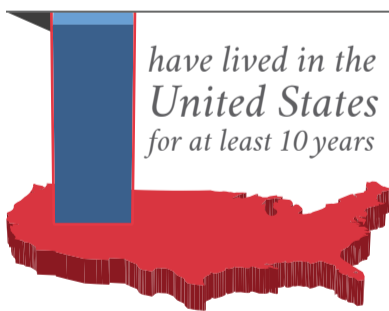
1.4 MILLION in FY1997
to between **300,000 & 500,000**
PER YEAR SINCE 2010



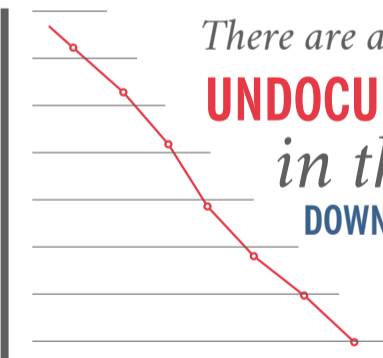
Between 2011 and 2015,
NEARLY HALF OF ALL NEW IMMIGRANTS
WERE COLLEGE GRADUATES

NEARLY 66%
OF UNAUTHORIZED IMMIGRANTS

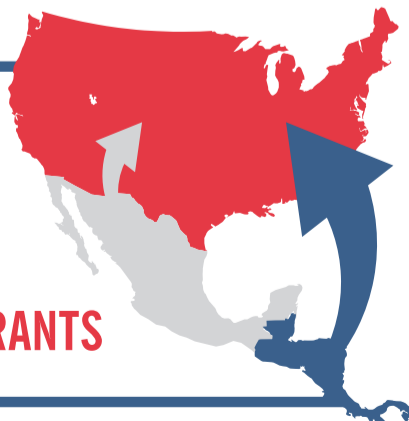
have lived in the United States for at least 10 years



There are approximately **11 MILLION UNDOCUMENTED IMMIGRANTS**
in the United States
DOWN FROM A PEAK OF 12.2 MILLION IN 2007 AND HOLDING STEADY



Today, more migrants
FROM CENTRAL AMERICA
are apprehended at the
Southwestern border
THAN MEXICAN MIGRANTS



VISA OVERSTAYS NOW OUTNUMBER UNLAWFUL BORDER CROSSINGS
as the main source of unauthorized immigration